

# MTGPlus



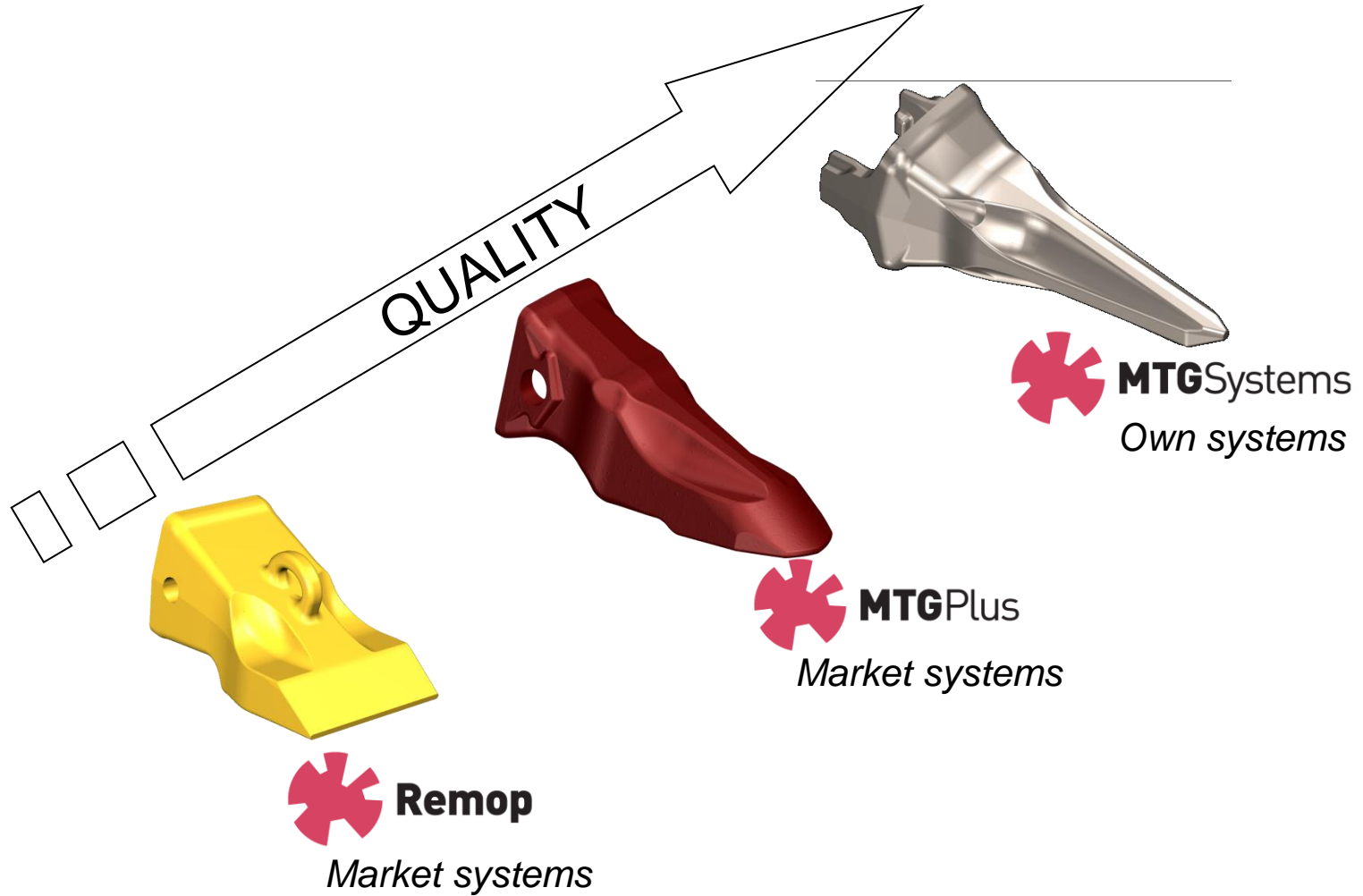
**MTG**

No limits innovation

**ENTRACK NORGE AS**



# MTG BRANDS



# MTG Plus features

**MTG plus**

**Innovative teeth & protectors for main systems of the market**

**INNOVATIVE DESIGNS: Better ones than originals & Remop:**

- **Self-sharpening designs**
- **Better penetration**
- **Longer life**
- **Less breakages**
- **Bigger range: one design per application**
- **Met steels**



**MTG**

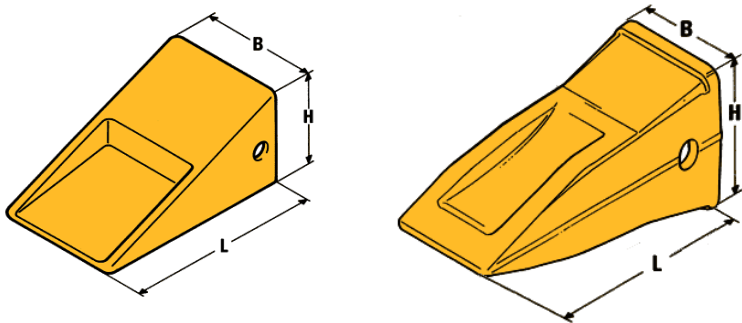
No limits innovation

**ENTRACK NORGE AS**

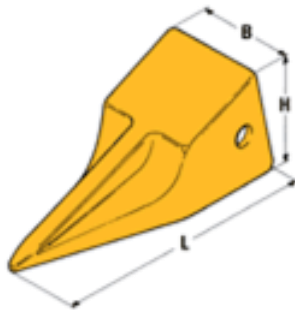
# MTG Plus features

Before MTG+

**ABRASION  
Resistance**



**PENETRATION**



With MTG+

**ABRASION  
Resistance +  
PENETRATION**



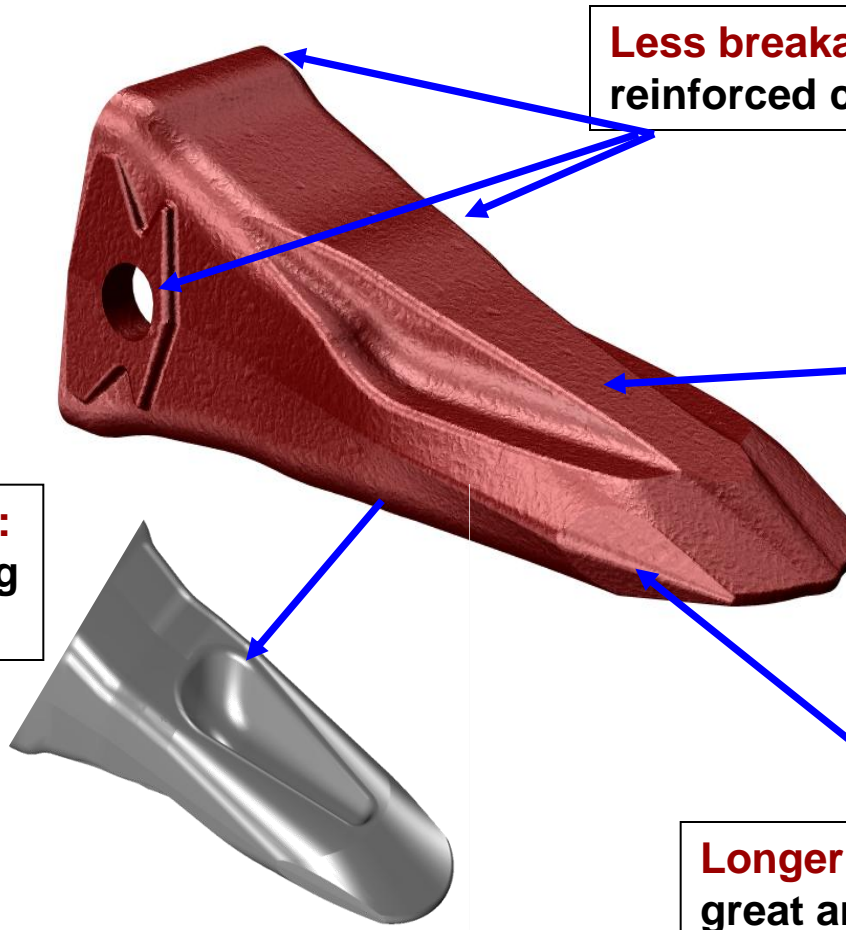
# MTG Plus features

**Less breakages:**  
reinforced contact points

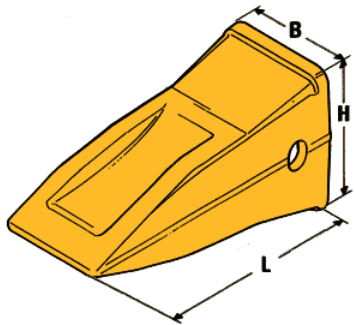
**Better self-sharpening:**  
redesigned central rib




**Better penetration:**  
less section during  
all tooth life

**Longer life:**  
great amount of wear material




# MTG Plus features






CAT	MTG+	
		
Short (1)	I	I
Long (2)	S / U / T	L
HDL (2)	E	H
HDA (3)	E / EX	A / AX
4 designs	6 designs	5 designs







# MTG Plus design comparison

S 

Long   


L 



R1U3352-R:	5,60 kgs.	- 240 mm.	 
MC35S:	5,75 kgs. (+3%)	- 262 mm. (+9%)	
MC35L:	6,76 kgs. (+21%)	- 265 mm. (+10%)	

# MTG Plus design comparison



**R9N4352R:**

**7,59 kgs.**

**- 257 mm.**



**MC35E:**

**7,12 kgs. (-6%)**

**- 278 mm. (+8%)**



**MTG**

No limits innovation

**ENTRACK NORGE AS**

# MTG Plus design comparison



**R9W2359:**

**5,04 kgs.**

**- 245 mm.**

**MC35V:**

**5,60 kgs. (+11%)**

**- 280 mm. (+14%)**



**MTG**

No limits innovation

**ENTRACK NORGE AS**

# MTG Plus design comparison



**R9N435-R:**

**9,63 kgs.**

**- 248 mm.**

**MC35A:**

**10,45 kgs. (+9%)**

**- 293 mm. (+18%)**



**MTG**

No limits innovation

**ENTRACK NORGE AS**

# New MTG Plus range adaptable to Caterpillar

Design	20	22	25	30	35	40	45	55	60	70	80
<b>S</b>	MC20S	MC22S	MC25S	MC30S	MC35S		MC45S	MC55S			
<b>U</b>			MC25U	MC30U	MC35U	MC40U	MC45U	MC55U		MC70U	<b>NEW</b>
<b>F</b>				MC30F	MC35F	MC40F	MC45F	MC55F			
<b>E</b>				MC30E	MC35E	MC40E	MC45E	MC55E	MC60E	MC70E	
<b>EX</b>							MC45EX				
<b>P</b>		<b>NEW</b>		MC30P	MC35P	MC40P	MC45P	MC55P	MC60P		
<b>V</b>	MC20V		MC25V	MC30V	MC35V	MC40V	MC45V	MC55V	MC60V	MC70V	
<b>W</b>	MC20W	<b>NEW</b>		MC30W	MC35W	MC40W	MC45W	MC55W			
<b>WI</b>			MC25WI		MC35WI		MC45WI		MC60WI		
<b>T</b>				MC30T	MC35T						

<b>L</b>	MC20L		MC25L	MC30L	MC35L	MC40L	MC45L	MC55L			
<b>H</b>				MC30H	MC35H	MC40H	MC45H	MC55H			MC80H
<b>D</b>						<b>NEW</b>				MC70D	
<b>A</b>			MC25A	MC30A	MC35A	MC40A	MC45A	MC55A	MC60A	MC70A	MC80A
<b>AX</b>					MC35AX	<b>NEW</b>	MC45AX	MC55AX	MC60AX		
<b>I</b>			MC25I	MC30I	MC35I	<b>NEW</b>				<b>NEW</b>	
<b>IX</b>							MC45IX	MC55IX	<b>NEW</b>		

 New products



**MTG**

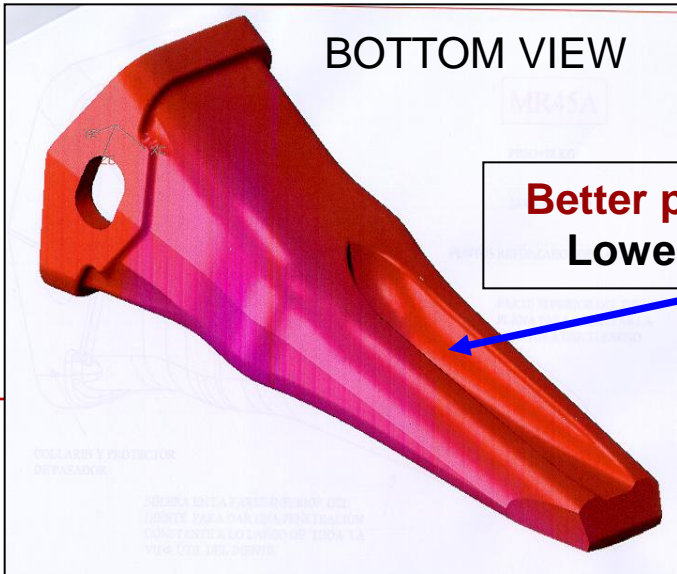
No limits innovation

**ENTRACK NORGE AS**

# Ripper MTG Plus adaptable to Cat

**2 designs: Penetration & Abrasion (3 lengths)**

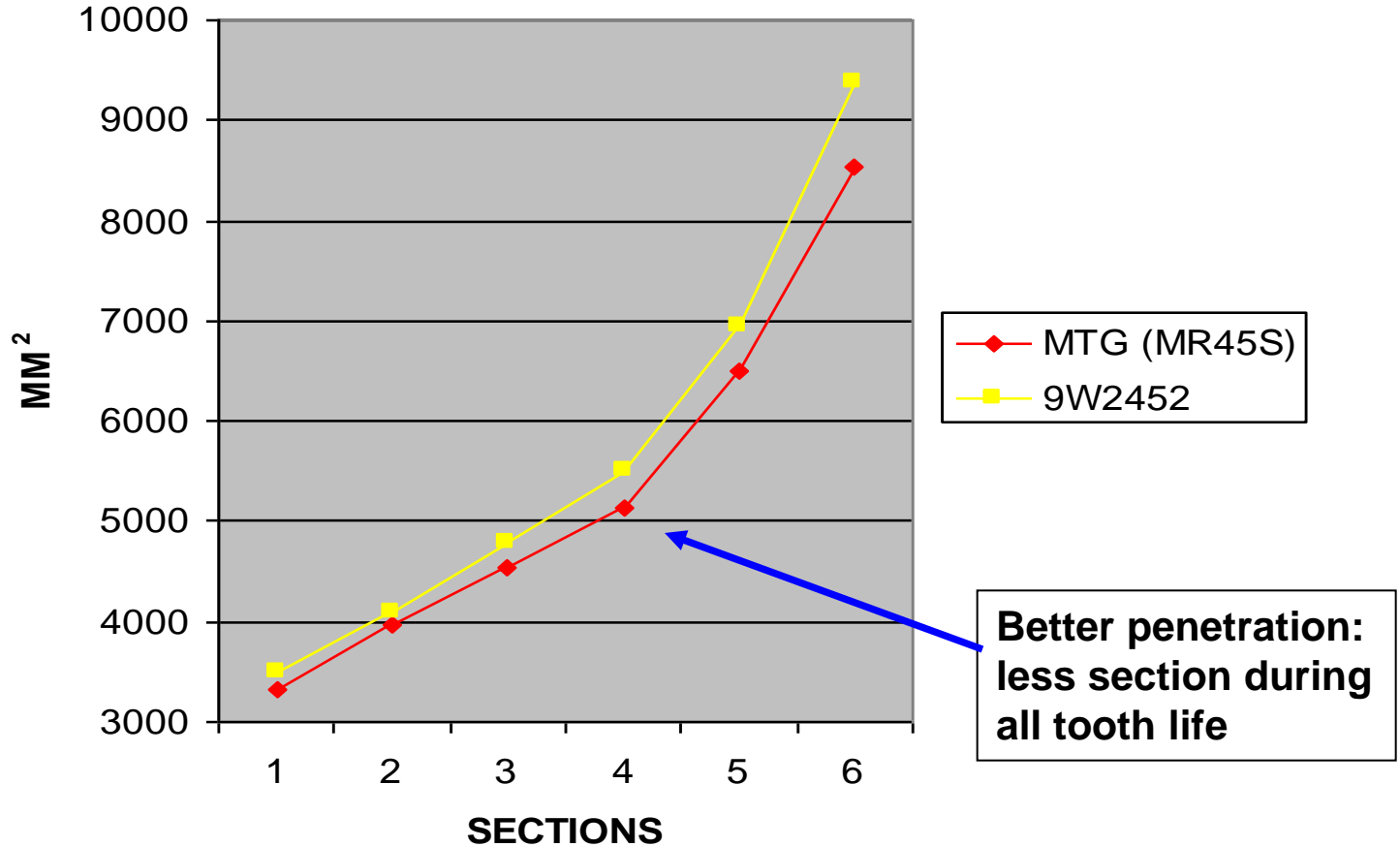
**Less breakages:**  
reinforced  
contact  
points & pin  
protector



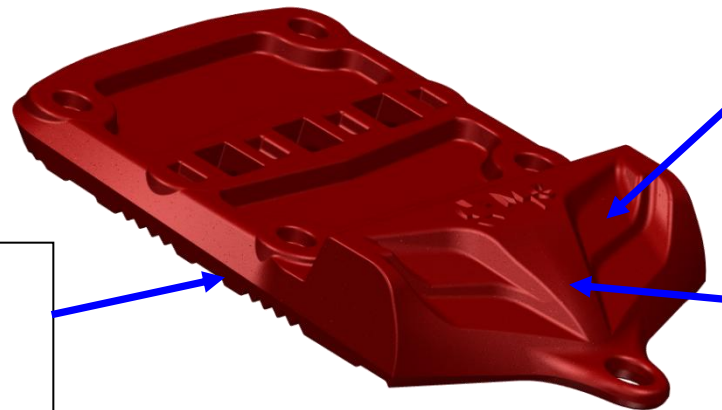
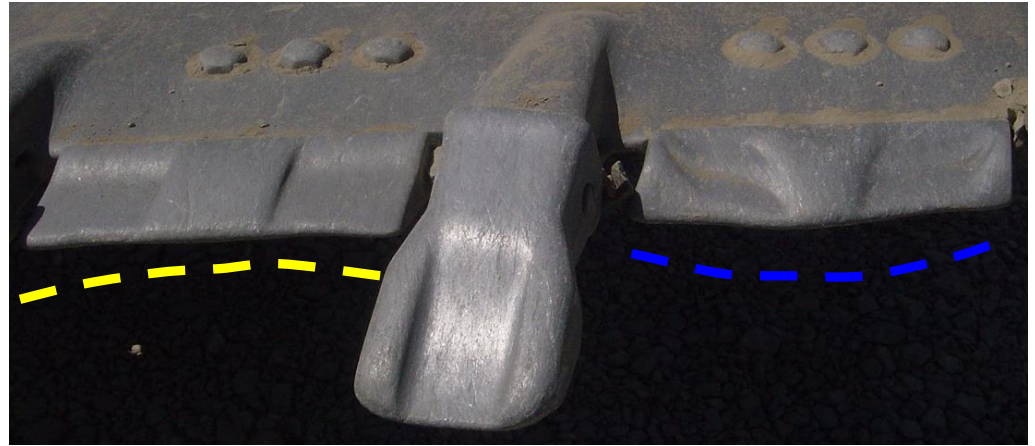
**Better penetration:**  
Lower channel

**ENTRACK NORGE AS**

# Ripper MTG Plus



# Bolt-on CAT shrouds range



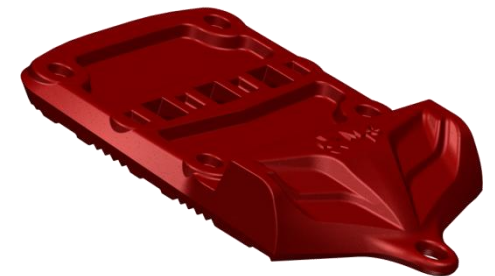
**Better penetration:**  
**Self-sharpening design**

**Longer life:**  
**Grooves for Tungsten carbide**

**Longer life:**  
**More wear material**

## Bolt-on CAT shrouds range

CAT Machines	Type	Reference	Stock available	Thickness	Weight (kg)
990, 992B, 992C, 992D, 992G	Standard	4ML70BC	Yes	60 mm	78
	Standard	4ML70BLD	Yes	60 mm	78
	Standard	4ML70BRD	Yes	60 mm	78
988F, G	Standard	4ML50BC	Yes	45 mm	37,5
	Standard	4ML50BLD	Yes	45 mm	37,5
	Standard	4ML50BRD	Yes	45 mm	37,5
980C, F	Standard	4ML45BC	Yes	41 mm	20
	Standard	4ML45BLD	Yes	41 mm	20
	Standard	4ML45BRD	Yes	41 mm	20




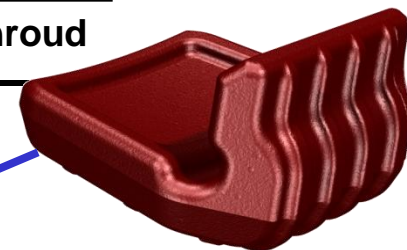
# Weld-on shrouds range

Blade thickness (mm)	Machine	Reference	Width (mm)	Weigh	Stock available
40-50	Excavators	4ML50UC	150	7	Yes
	Excavators	4ML50UC3	300	13,9	Yes
60-75	Excavators	4ML70UC	250	21,1	Yes
	Excavators	4ML70ULD	230	19,5	Yes
	Excavators	4ML70URD	230	19,5	Yes
	Loaders	4ML70UC2	250	22	Yes
	Excavators	4ML70UC3	1000	90	Yes
	Excavators	4ML70UC3	1000	90	Yes
80-100	Excavators	4ML90UC	358	31,5	Yes
	Excavators	4ML90URD	355	31,5	Yes
	Excavators	4ML90ULD	355	31,5	Yes
	Loaders	4ML90UC2	381	62,5	Yes
	Excav. & Front Sh.	4ML90UC3	558	53	Yes
	Excavators	4ML90UC3	558	53	Yes
100-120	Excav. & Front Sh.	4ML120UC	320	36	Yes
	Excav. & Front Sh.	4ML120ULD / URD	320	37	jul-05



# Lateral Weld-on shrouds range

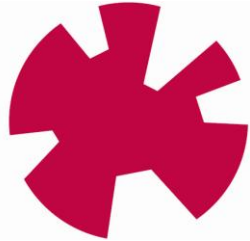
MTG+ reference	Kgs/Lbs	Original reference	
4MB70UL	3,62 / 7,98	WP72S	Universal shroud
4MB20UL	3,66 / 8,07	151LS	Universal shroud
4MB25UL	4,83 / 10,65	153LS	Universal shroud
4MB30UL	8,5 / 18,74	154LS	Universal shroud
4MB30ULH	10,3 / 22,66	138-6551	Lateral heel shroud



# Product Range

Adaptable to the most popular systems of the market  
Caterpillar, Conical, Komatsu, Parabolic, Poclain, etc..

**Total: 250 teeth and 80 adapters**



**MTG**

**Philosophy:**

A design for each machine and application

**8 tooth designs for  
excavators**

**5 tooth designs for loaders**



**MTG**

No limits innovation

**ENTRACK NORGE AS**



**MTG**Plus

# References



**MC** + **Size** + **Design**

**A letter for each system**

Check reference guide:

- C Caterpillar side pin system
- N Conical system
- K Komatsu system
- U Parabolic system
- P Poclain system

- E **Extra**
- F **Flared**
- P **Penetration**
- S **Standard**
- U **Universal**
- V **Vector**
- W **Double**
- V **Vector**
- I **Impact**
- A **Abrasion**
- D **Delta**
- H **Heavy**
- L **Long**



**MTG**

No limits innovation

**ENTRACK NORGE AS**



# Remop References

Remop

**R + Original Reference**

Copy from original design



Remop

Ri

b

**R + Original Reference + R**

Improved copy of the original design



**MTG**

No limits innovation

**ENTRACK NORGE AS**

# Thank you

**ENTRACK NORGE AS**



**MTG**

No limits innovation